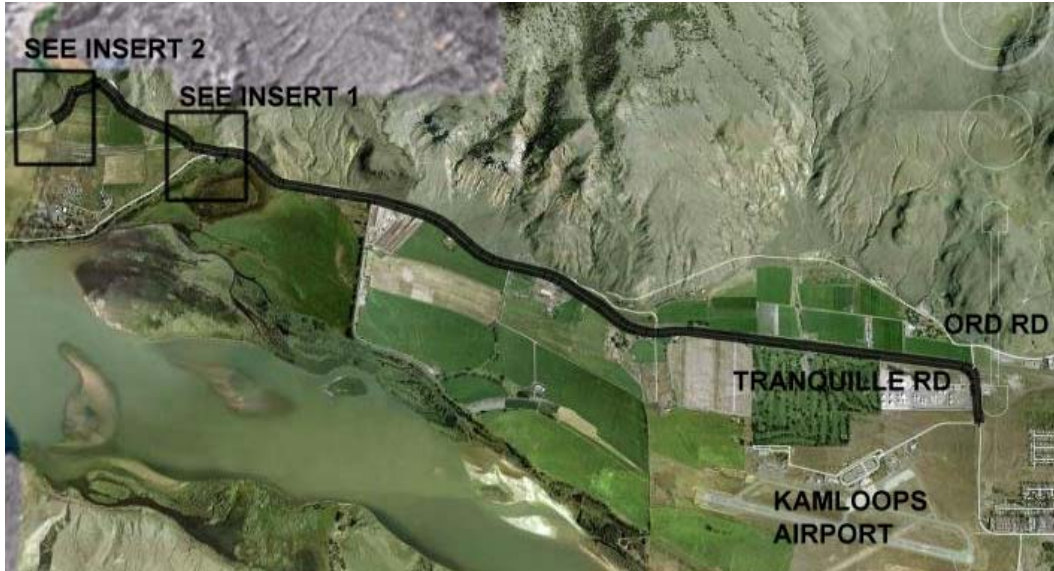


INSTRUCTIONS TO PINE PARK



Drive to airport; continue north on Tranquille past airport.



From the corner of Tranquille and Ord Rd, drive 5.7 km to the first turn off (see insert 1). Turn right onto Red Lake Rd.



Drive another 2.5 km; take first right after gravel pits (see insert 2). If you cross the bridge over Tranquille Creek, you've gone too far. Parking is at the end of the road before the gate into the park.