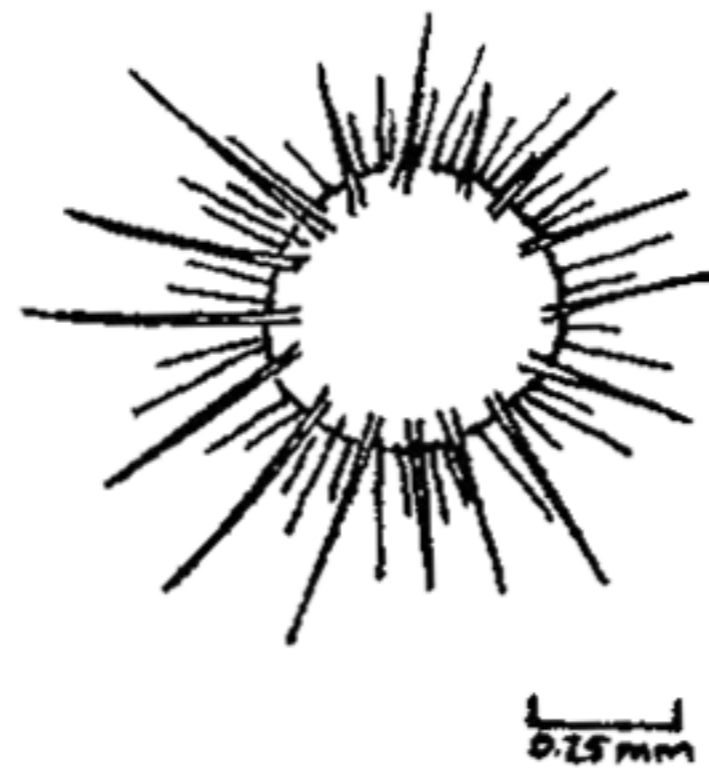


ZOOPLANKTON (Animals)

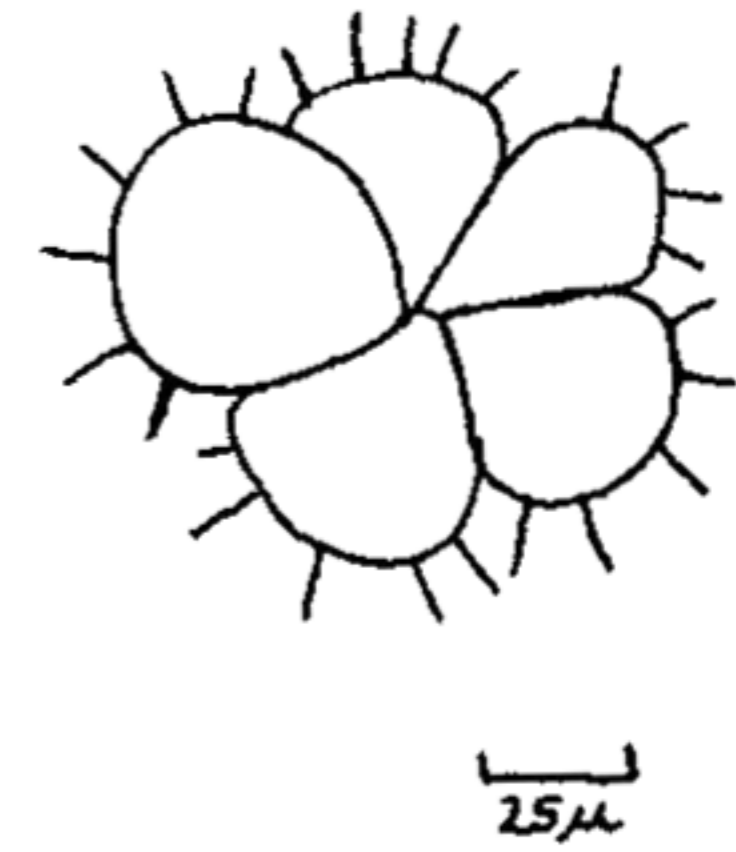
Phylum Protozoa



Tintinnid



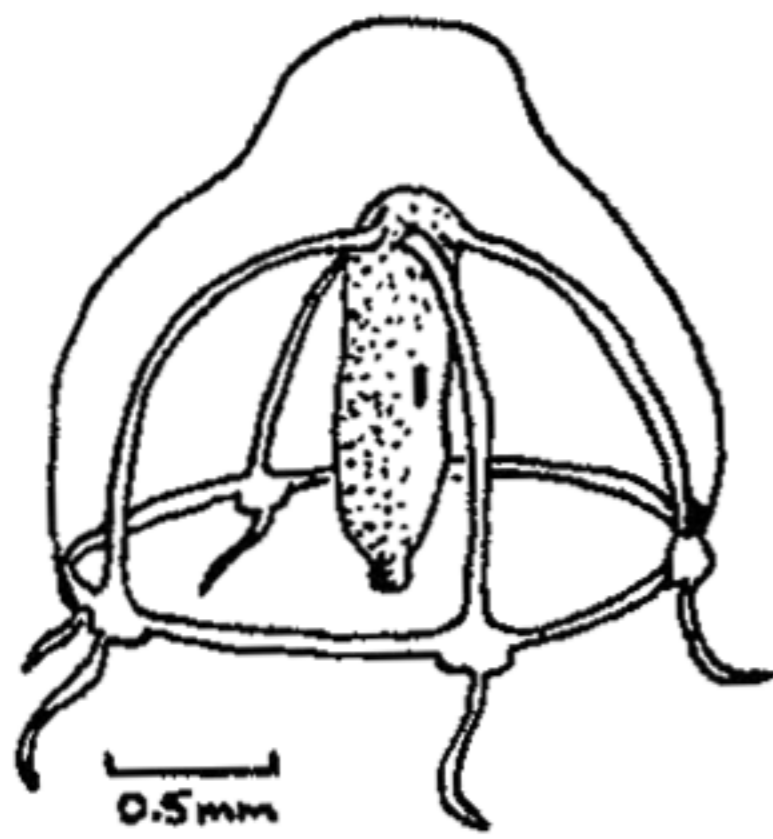
Radiolarian



Foraminifera

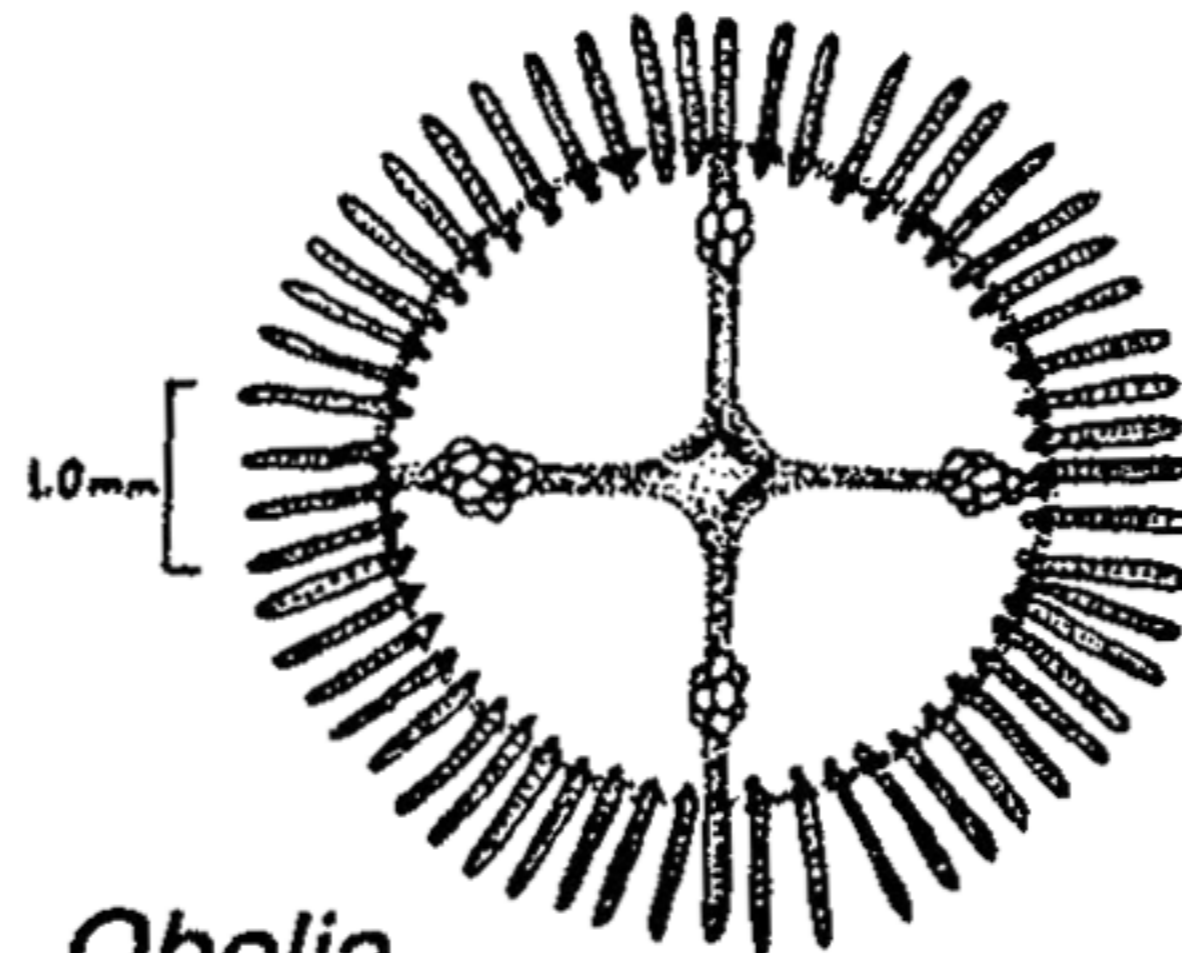
Phylum Cnidaria

Hydromedusae

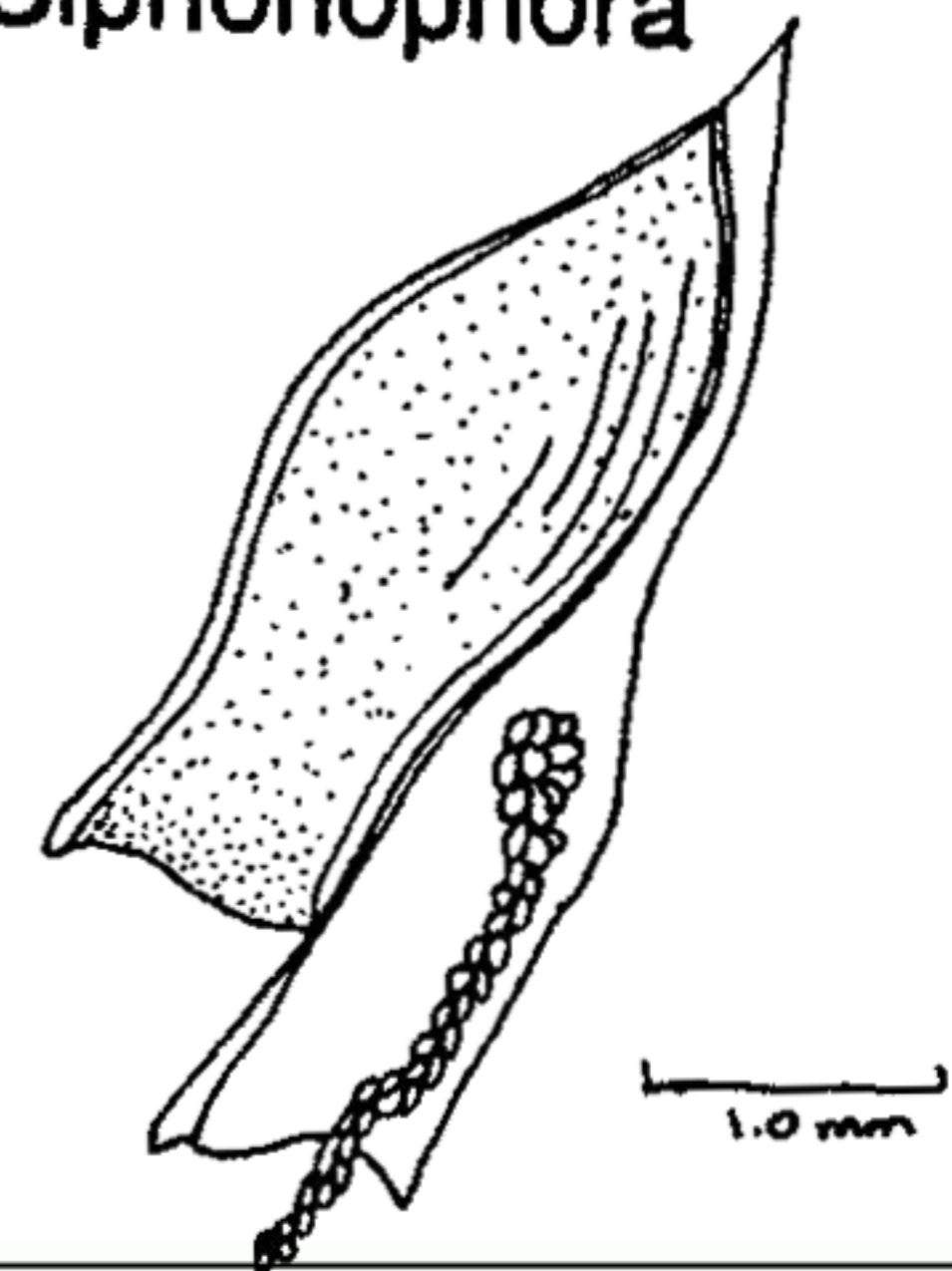


0.5 mm

Siphonophora



Obelia



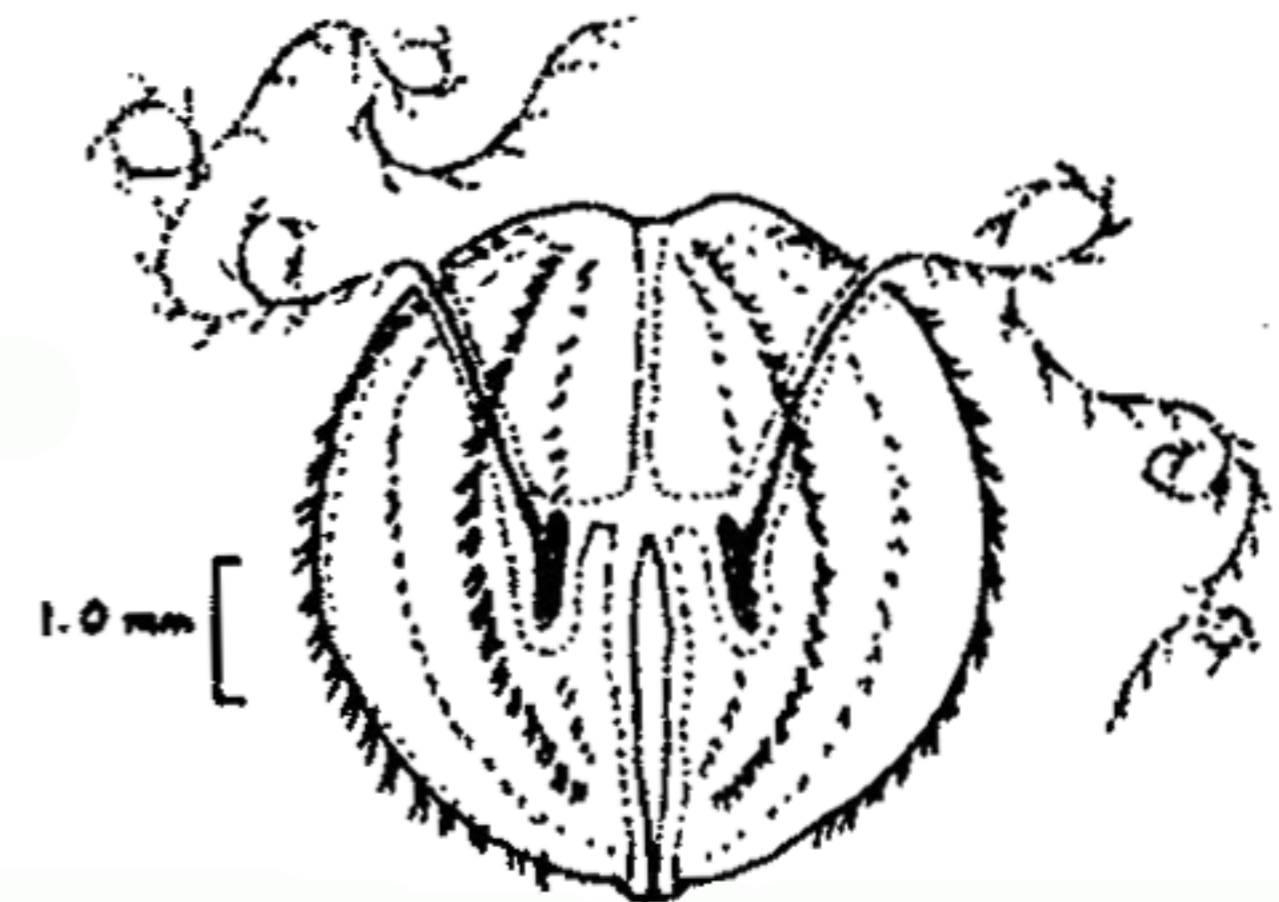
1.0 mm

Phylum Chaetognatha (Arrow worms)



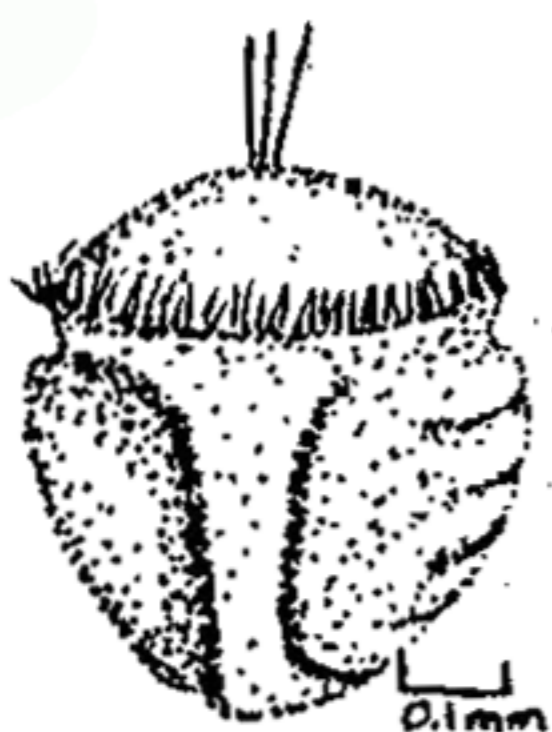
0.5 mm

Phylum Ctenophora (Comb jellies)



1.0 mm

Phylum Annelida, Class Polychaeta

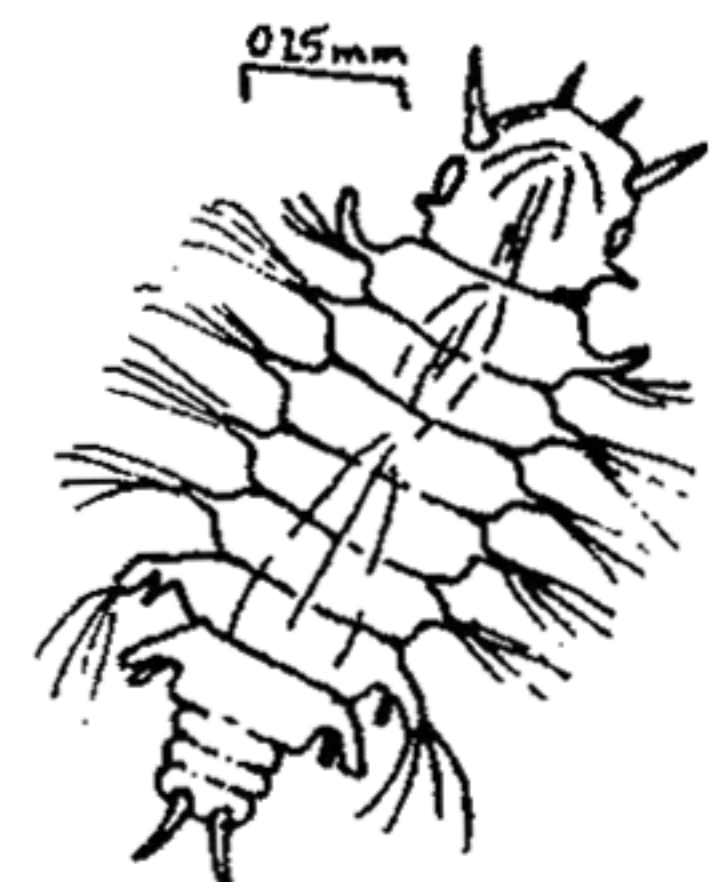


Trochophore



Metatrochophore

Nereid



(late larvae)